



**Bikecraft Fender Eliminator  
Harley Davidson  
Breakout & Fatboy  
(Basic Kit with LED Plate Light)**

***Welcome to the Bikecraft Family!***

*Thank you for choosing one of our Fender Eliminators – we're thrilled to have you as part of the BC community!*

*As an Australian business, we take great pride in designing and crafting high-quality parts right here on-site. We stand behind everything we create, and we're always here to help. If you have any questions or need assistance, don't hesitate to reach out to your supplier or alternatively you can contact us at [info@bikecraft.net.au](mailto:info@bikecraft.net.au)*

*For the best results, we recommend having your new kit installed by a qualified technician.*

*Once your fender eliminator is fitted, we're sure you'll love the look – and so will everyone who sees it! Prepare for a little extra envy, whether they're bike enthusiasts or not.*

*We'd love to see your bike in action! Feel free to share photos with us, or tag us on **Facebook** or **Instagram**.*

*Enjoy your new ride, and stay safe out there!*

*Cheers,*

***The Bikecraft Team***

# Installation Instructions

**These instructions cover installation of the BC Fender Eliminator on the following Harley Davidson models:**

- \* 2013-2017 Breakout (twin-cam)**
- \* 2018'up Breakout (M8)**
- \* 2018'up Fatboy (M8)**

**Instructions are suitable for installation of the BC Fender Eliminator on above listed HD models for this style product - integrated LED plate light with existing rear lights/indicators. Includes fitment of standard licence plates and variable licence plate dimensions including Western Australia, South Australia and New Zealand style, and Euro/UK style plates.**

*Note: It is recommended this kit is installed by a qualified technician. It is the responsibility of the owner to check that aftermarket kits meet your local state road laws. Any risk arising from non-factory modifications or the installation of aftermarket parts is not liable for claim whatsoever against Bikecraft.*

*All kits are quality inspected prior to packaging and are free from defect when supplied. Any claim for faulty workmanship of a product is to be sought wholly in accordance with Australian Consumer Law.*

*If faulty workmanship is identified, remedy entitlements will be congruent with the prescribed legislation. Any such claim is limited solely to the remedy of the faulty work; no such claim for loss, consequential damages or otherwise being admissible.*

Remove seat and disconnect all OEM rear lighting at plugs.

Remove rear fender, as per HD guidelines (refer to manual).

Place rear fender upside down on a soft, non-scratching surface.

Remove the OEM brace and plastic inner guard from rear fender.



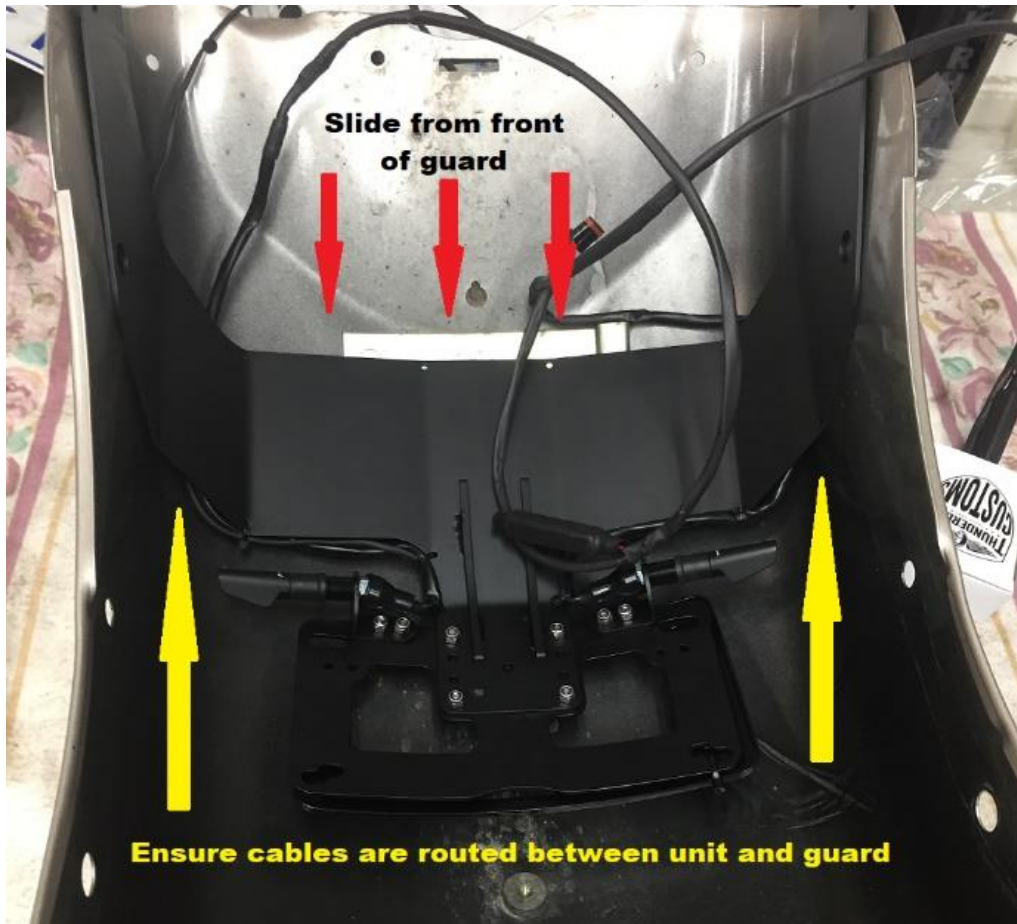
Attach new licence plate surround to the fender eliminator licence plate backing with a cable tie as shown below, to temporarily secure in place (**not applicable for WA/SA/NZ or Euro/UK models**).



Using supplied cable ties, secure new LED plate light wiring to provisions along the edge of fender eliminator frame, as shown above.

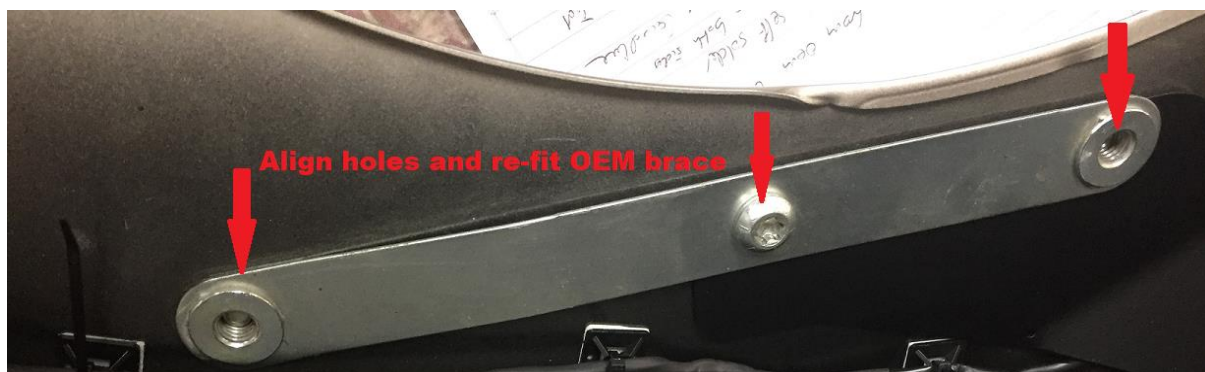
Trim off any excess to cable ties.

Carefully slide the fender eliminator inside the rear fender from the 'front' end, as shown below.



***Ensure all cabling is correctly routed between the fender eliminator and rear fender.***

Align fender eliminator with holes in the rear guard and re-fit OEM brace to secure the fender eliminator, as shown below.

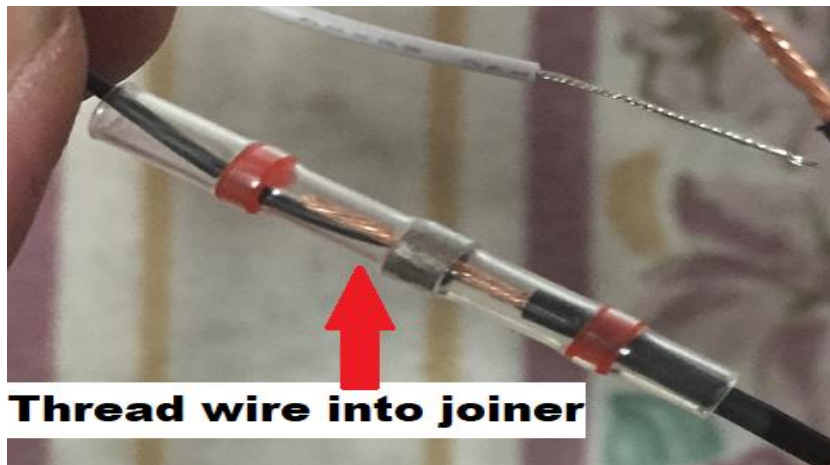


Cut plug from OEM licence plate light wiring.

Proceed to join these wires with new LED licence plate light wiring on fender eliminator with the supplied self-solder joiners.

***Ensure wire ends are adequately prepped (strands twisted) prior to joining.***

Thread a heat shrink tube onto one of the negative wires before threading both ends of the wire into the self-solder joiner.



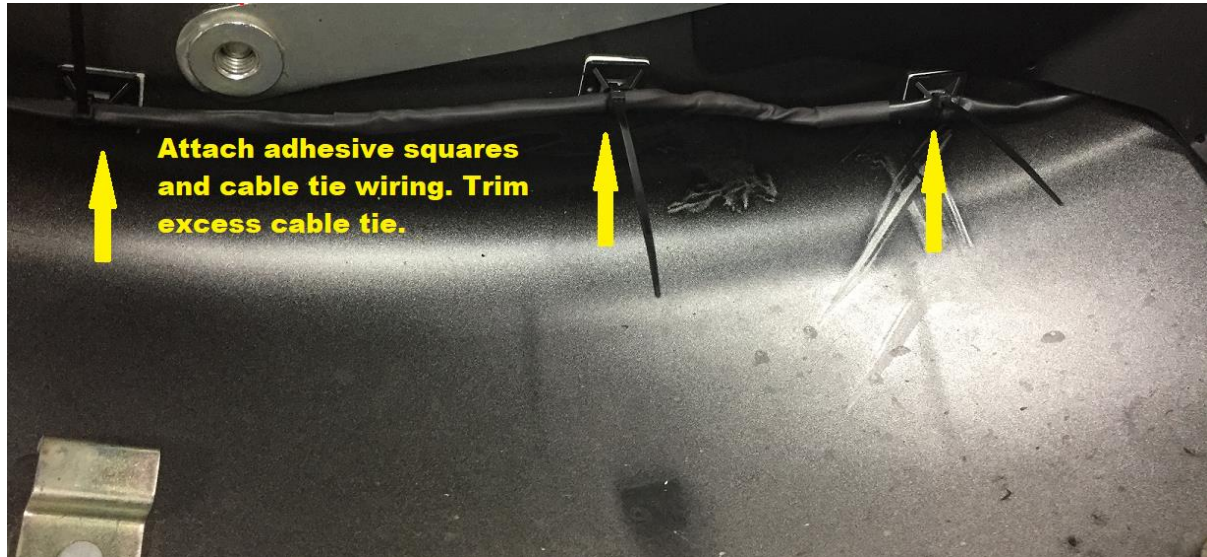
Apply heat to securely self-solder the wiring.



Repeat for the positive wires.

Before fixing the heat shrink, check all solder joints by gently pulling on the wires. Once satisfied with the connections, pull heat shrink tubing over the joints and apply heat to secure.

Attach supplied adhesive squares to inside of rear fender and secure new licence plate wiring and OEM turn signal wiring with supplied cable ties, as shown below.



Trim off all excess to cable ties.

Fit licence plate into the supplied plate surround (**not applicable for WA/SA/NZ or Euro/UK models**).

***Prior to fitment of licence plate into plate surround, slightly curve the plate by gently applying pressure, placing over a suitably rounded object if required.***

Use supplied hardware to affix licence plate to the fender eliminator backing plate.

***Please note in some instances you will be required to carefully trim back the license plate to allow flush seating within the surround.***

Re-affix rear fender, as per HD guidelines (refer to manual).

Reconnect all wiring plugs and check all lights are functioning correctly.

Re-affix seat.